

Classroom Gestures

(From the book, *Tools & Toys: Fifty Fun Ways to Love Your Class*)



The letter "A"
Used to show that
the student has
an **answer**.

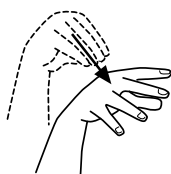


The letter "I"
Used to show that the student has
a **question**.
("I have a question.")

The letter "C"
Used to show that
the student has a
comment.

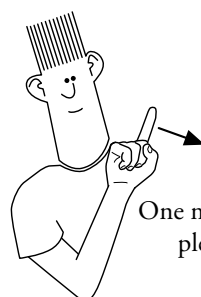


Lights off.

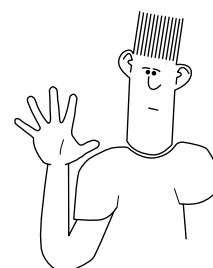


Lights on.

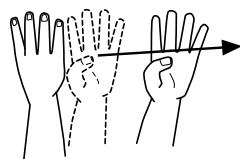
May I use
the restroom?



One moment,
please.



That was off-topic.



Line up, please.



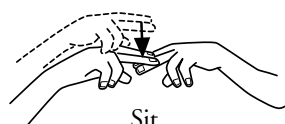
volunteer



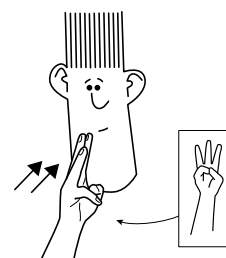
Thank
you.



Stand
up.



Sit
down.



May I get a drink?



I am ignoring you.
(student-to-student)

Suggested resources:

<http://commtechlab.msu.edu/sites/aslweb/browser.htm>

www.aslpro.com

*Download mini-posters of these basic signs
from our website and display in your room
as a reference guide for your students.*

www.NewManagement.com



Pencils down.